

atriádi

price list

12.1.2013

contents

Introduction	3
General Information	4
Materials & Finishes	6
Notes	8
Occasional Tables	
Tapered Cylinder	10
Cube	11
Eased Square	12
Eased Rectangle	13
Round	14
Ellipse	15
Corner Round	16
Water Drop	17
Eased Triangle	18



accent your environment with atriádi

Atriádi is about creating a custom space you will enjoy for years. Select the style, color, and size that fits the mood of your space. Delivery is fast and the price is affordable. If your imagination exceeds the styles we offer, create a custom look that is uniquely your own. So go ahead; accent your environment with Atriádi!

general information

Pricing & Specifications

- All prices stated herein are subject to change without notice.
- All orders will be accepted and processed with current lead times and prices of when Atriádi receives the order.
- All specifications stated herein are subject to change without notice.
- All dimensions stated herein are nominal.

Leadtime

Please contact your local sales representative or Atriádi Customer Service for current lead times.

Warranty, Limitations & Liability

Atriádi products are warranted against all defects in materials and workmanship for 10 years from date of delivery. This warranty does not apply to damage resulting from accident, freight damage, misuse, negligence, abuse, or normal wear and tear.

Correct product specification for a particular application is the responsibility of the purchaser. This warranty does not extend to Customer-Own Material (COM): fabric, leather, or other COM materials.

This constitutes the entire warranty and is in place of and in lieu of all other warranties of everykind whether implied or expressed, including, but not limited to, the warranty of fitness for a particular purpose or warranty of merchantability.

Terms

Orders less than \$1500 require payment remittance prior to shipment. Orders greater than \$1500 require a 30% deposit remittance prior to product shipment with the remaining balance due 30 days from the shipment date.

Freight

Please contact your local Atriádi Representative or our Customer Service Team for a custom freight quote.

Atriádi reserves the right to select the most appropriate carrier and routing on all shipments. All orders, whether shipping collect, prepaid, or third-party billing are FOB, which means that responsibility for the product becomes that of the buyer upon delivery to the freight company.

Freight Damage and Claims

We carefully inspect and pack our products before turning them over to the carrier and everything is packed to prevent damage in transit. Once we release the shipment to the carrier, we cannot be responsible for damage in shipment as the transportation company assumes complete responsibility for delivering the product.

Upon delivery, all products must be inspected immediately for correct quantity and freight damage (including concealed damage). Damage or shortage claims must be filed by the purchaser with the freight carrier within 48 hours of delivery receipt. Failure to file timely claims may result in the freight carrier to deny the claim. If freight is prepaid the freight charge will appear on the invoice. All shipping delivery dates are approximate.

general information

How to Place an Order

Please provide the following information:

- PO Number
- "Bill To" and "Ship To"
- Contact Name and Number
- Project Name
- Product Quantity
- Complete Model Number
- Brief Description
- List Option (when applicable)

Order Entry and Communications

All communications for custom and standard orders should be directed to our corporate office at:

Atriádi	Phone: 330-833-4102
1369 Sanders, SW	Fax: 866-631-0288
Massillon, OH 44648	Email: sales@atriadi.com

Order Acknowledgements

All orders will be acknowledged in writing by fax or e-mail. You can expect to receive an acknowledgement within 24 hours after receipt of order. We ask that you confirm the acknowledgement is correct within 48 hours.

Changes and Cancellations

Given our short lead times and the custom nature of our products, cancellations or changes, including models, quality, finish, and materials, can only be accepted within 48 hours of order acknowledgment. All approved changes and cancellations must be sent via fax or email to ensure accurate recording of your change request. Please contact the Atriádi Customer Service Team for assistance.

Returns

All returns must be approved and authorized in writing by the Atriádi Customer Service Team before any return can take place. Due to the custom nature of our products we are unable to accept returns. However, in those instances where a return has been authorized shipments will not be accepted unless accompanied by written authorization from the Atriádi Customer Service Team. Merchandise must be returned in original shipping materials and a restocking fee will apply.

Storage

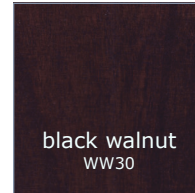
If you are not able to accept delivery within a week of the acknowledged date we can store the product at your expense. If our Customer Service Team is notified in time to postpone production, storage charges can be avoided. Please notify our Customer Service Team, in writing, of any schedule changes immediately and they will try to accommodate your request.

Having Trouble

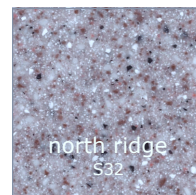
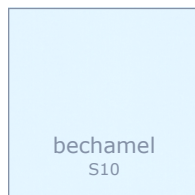
Every effort has been made to make it easy to correctly specify the products you wish to order. In the event you experience difficulty or are unsure of a particular item, please contact the Atriádi Customer Service Team for assistance.

materials & finishes

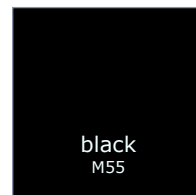
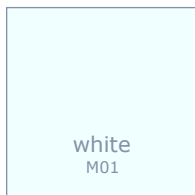
wood finishes



solid surface finishes



metal finishes



laminite finishes



Sometimes an interior requires a piece to match perfectly while at other times it may need to provide a stunning contrast. Atriádi offers laminates for corporate, healthcare and education environments from the standard offerings of Abet Laminati, Formica, Kydex, Nevamar, Pionite and Wilsonart that are sure to complement any design solution.

Samples

- If you require physical wood or metal samples please contact Atriádi Customer Service Team at 330-833-4102 or sales@atriadi.com.
- If you require physical solid surface samples please contact LivingStone at 866-433-2229 or through their website: livingstonesurfaces.com.
- If you require physical laminate samples please contact our laminate partners directly: Abet Laminati at 800-228-2238, Formica at 800-367-6422, Kydex at 800-325-3133, Nevamar and Pionite at 877-726-6526 and Wilsonart at 800-433-3222.

* Clear coat finish allows the natural beauty of steel to be seen, revealing inherent inconsistencies in the steel.

materials & finishes

Custom Finish Program

Atriádi provides a selection of standard wood, metal and solid surface finishes. We understand that certain projects may require additional finish sections.

Custom Wood Finish □ At the time of the order please provide Atriádi with 2 labeled samples that are at least 3" square. Samples should be labeled with the customer's contact information along with the order number and sent to Atriádi, 1369 Sanders, SW, Massillon, OH 44648. We will return 2 of our matched samples with 1 of our original samples for a signed approval. Upon signing off on the match, 1 of our matched samples needs to be returned to Atriádi for final processing.

Orders that require a custom wood finish may extend the standard lead time. Please allow 10 business days for the approval process.

Custom Metal Finish □ At the time of the order, please provide Atriádi with 2 labeled samples that are at least 3" square. Samples should be labeled with the customer's contact information along with the order number and sent to Atriádi, 1369 Sanders, SW, Massillon, OH 44648. We will return 2 of our matched samples with 1 of our original samples for a signed approval. Upon signing off on the match, 1 of our matched samples needs to be returned to Atriádi for final processing.

Orders that require a custom metal finish may extend the standard lead time. Please allow 10 business days for the approval process. Bright whites and micas are available but are quoted on a per job basis and charges may differ from those listed under the Custom Upcharge section.

Custom Upcharge □ Custom wood and metal finishes can be developed to meet your specific needs. A \$400 net upcharge will be applied per color, per order. This upcharge is waived for projects of \$50,000 list price or more. Custom finishes are valid for 6 months. After that period the custom finishes will need to be rematched and a new signed approval must be obtained.

Non-standard Solid Surface Finish □ Atriádi has access to LivingStone's full offering of solid surface products. Please contact Atriádi's Customer Service Team as they will be able to provide a quote for the product of your choice.

Non-standard Laminate Finish □ Atriádi has access to the full line of laminates our many partners provide. If the laminate you select is outside of their standard offering, please contact Atriádi's Customer Service Team and they will be able to provide a quote for the product of your choice.

Finish Care and Maintenance

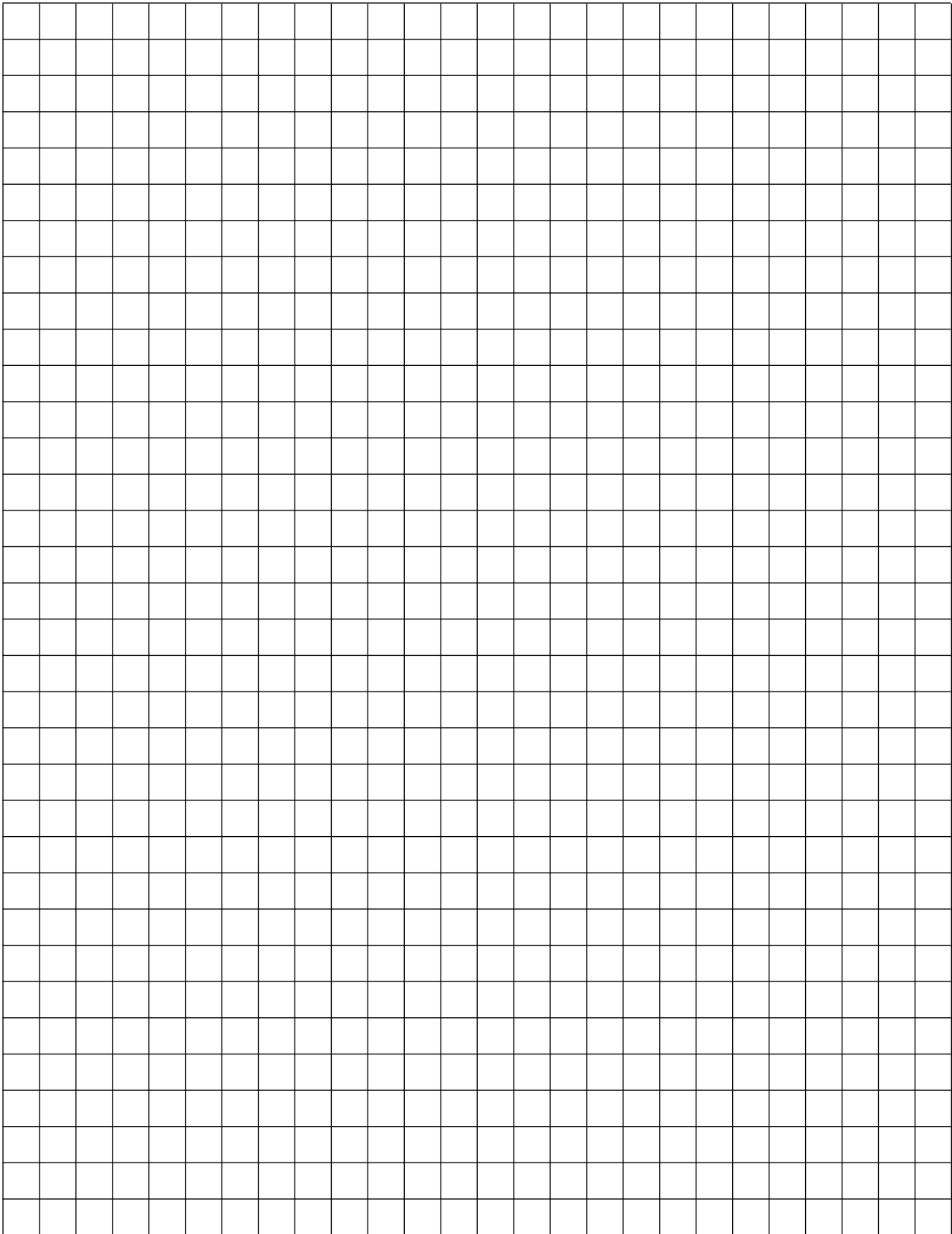
Wood □ Clean wood veneers with a soft damp cloth, wiping in the direction of the grain, avoid abrasive cleaners, hot water and steel wool. Remove spilled liquids with a gentle blotting motion.

Metal □ Clean with a soft damp cloth avoiding abrasive cleaners, hot water and steel wool.

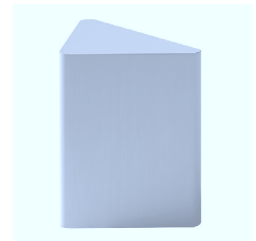
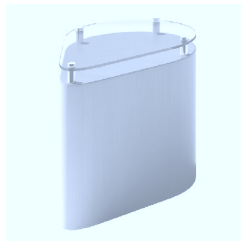
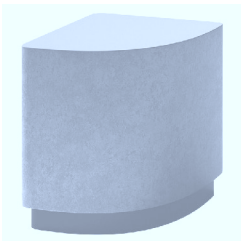
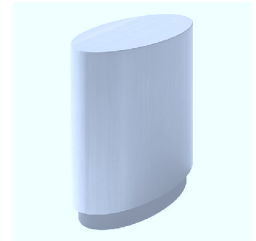
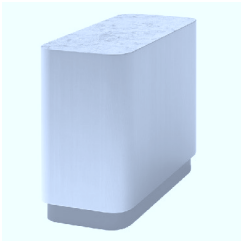
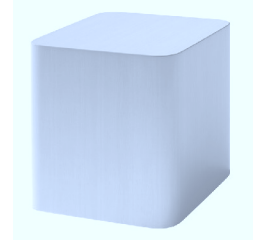
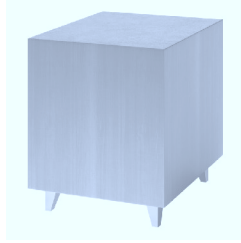
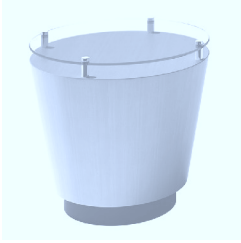
Solid Surface □ Clean LivingStone solid surface with a soft cloth using mild soap and water, avoid hot water, abrasive cleaners and steel wool.

Laminates □ Clean plastic laminates with a soft cloth using mild soap and water, avoid hot water, abrasive cleaners and steel wool.

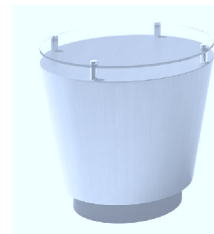
notes



occasional tables



tapered cylinder



ADD-ONS

model	top diameter	base diameter	height	laminate list price	veneer list price	solid surface top	clear glass top	base option	shipping weight
TCTC1815	18"	16"	15"	\$741	\$1334	\$425	\$850	\$150	24 lbs.
TCTC1820	18"	16"	20"	\$818	\$1472	\$425	\$850	\$150	32 lbs.
TCTC1824	18"	16"	24"	\$894	\$1609	\$425	\$850	\$150	38 lbs.
TCCU1829	18"	16"	29"	\$949	\$1708	\$425	\$850	\$150	46 lbs.
TCTC2015	20"	18"	15"	\$867	\$1561	\$490	\$850	\$150	26 lbs.
TCTC2020	20"	18"	20"	\$967	\$1741	\$490	\$850	\$150	35 lbs.
TCTC2024	20"	18"	24"	\$1055	\$1899	\$490	\$850	\$150	42 lbs.
TCTC2029	20"	18"	29"	\$1093	\$1967	\$490	\$850	\$150	51 lbs.
TCTC2415	24"	18"	15"	\$1269	\$2284	\$620	\$850	\$150	35 lbs.
TCTC2420	24"	18"	20"	\$1356	\$2441	\$620	\$850	\$150	46 lbs.
TCTC2424	24"	18"	24"	\$1438	\$2588	\$620	\$850	\$150	55 lbs.
TCTC2429	24"	18"	29"	\$1539	\$2770	\$620	\$850	\$150	67 lbs.
TCTC3015	30"	24"	15"	\$1549	\$2788	\$820	\$1000	\$150	45 lbs.
TCTC3020	30"	24"	20"	\$1630	\$2934	\$820	\$1000	\$150	60 lbs.
TCTC3024	30"	24"	24"	\$1705	\$3069	\$820	\$1000	\$150	72 lbs.
TCTC3029	30"	24"	29"	\$1882	\$3387	\$820	\$1000	\$150	87 lbs.
TCTC3615	36"	30"	15"	\$1773	\$3191	\$1100	\$1275	\$150	56 lbs.
TCTC3620	36"	30"	20"	\$1874	\$3373	\$1100	\$1275	\$150	74 lbs.
TCTC3624	36"	30"	24"	\$1949	\$3508	\$1100	\$1275	\$150	89 lbs.
TCTC3629	36"	30"	29"	\$2050	\$3690	\$1100	\$1275	\$150	107 lbs.

TO ORDER

EXAMPLE

1. Model Number
2. Material Selection (L for laminate, V for veneer)
3. Top Option (if applicable)
4. Base Option (if applicable)
5. Finish or Laminate Number
6. Metal Finish (if applicable)
7. Other Options (if applicable)

TCTC1815 V TRSP B50B WC30 M42 P101

MODEL MATERIAL TOP BASE FINISH METAL OTHER
NUMBER SELECTION OPTION OPTION NUMBER FINISH OPTIONS

Top Options

- 1/2" Solid Surface Square Edge..... TSSS
 - 1/2" Solid Surface Waterfall Edge TSSW
 - 1/2" Clear Glass Raised TCGR
 - 1/2" Clear Glass Flush..... TCGF
 - Laminate Top on Veneer Table..... TLVT
- Veneer tables w/laminate tops should be priced from the veneer column.

Top options will not change the overall height of tables.

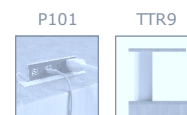
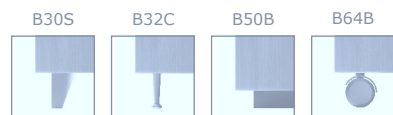
Base Options

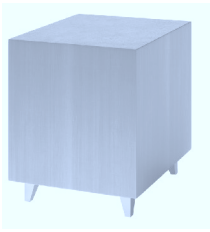
- Folto Leg w/Satin Finish B30S
- Folto Leg w/Chrome Finish B30C
- Fino Leg w/Chrome Finish B32C
- 2" Plinth w/Black Laminate B50B
- 2" Plinth w/Matching Table-Base Finish... B50M
- Casters w/Black Finish B64B

Base options will not change the overall height of tables.

Other Options

- Juice Bar..... P101 \$495
Pop-up power source, 2 outlets and 4 USB ports □
Dims. 4 3/8" x 8 1/4".
- Two-tier Table Round..... TTR9 \$290
2nd Tier □Dims. overall height 28" w/9" round solid surface top and metal support. Work surface swivels 360°. Please select metal and solid surface finishes.
- Two-tier Table Square..... TTS9 \$290
2nd Tier □Dims. overall height 28" w/9" round solid surface top and metal support. Work surface swivels 360°. Please select metal and solid surface finishes.
- Multiple Laminates..... TL03 \$200
Price includes 2 laminates on a single table.





cube

ADD-ONS

model	length	width	height	laminate list price	veneer list price	solid surface top	clear glass top	base option	shipping weight
TCCU1615	16"	16"	15"	\$471	\$848	\$500	\$850	\$150	32 lbs.
TCCU1620	16"	16"	20"	\$514	\$925	\$500	\$850	\$150	42 lbs.
TCCU1624	16"	16"	24"	\$557	\$1003	\$500	\$850	\$150	50 lbs.
TCCU1629	16"	16"	29"	\$600	\$1080	\$500	\$850	\$150	61 lbs.
TCCU1815	18"	18"	15"	\$523	\$941	\$545	\$850	\$150	34 lbs.
TCCU1820	18"	18"	20"	\$566	\$1019	\$545	\$850	\$150	45 lbs.
TCCU1824	18"	18"	24"	\$621	\$1118	\$545	\$850	\$150	54 lbs.
TCCU1829	18"	18"	29"	\$664	\$1195	\$545	\$850	\$150	65 lbs.
TCCU2415	24"	24"	15"	\$607	\$1093	\$680	\$850	\$150	45 lbs.
TCCU2420	24"	24"	20"	\$634	\$1141	\$680	\$850	\$150	60 lbs.
TCCU2424	24"	24"	24"	\$703	\$1265	\$680	\$850	\$150	72 lbs.
TCCU2429	24"	24"	29"	\$755	\$1359	\$680	\$850	\$150	87 lbs.
TCCU3615	36"	36"	15"	\$745	\$1341	\$950	\$1270	\$150	89 lbs.
TCCU3620	36"	36"	20"	\$759	\$1366	\$950	\$1270	\$150	118 lbs.
TCCU3624	36"	36"	24"	\$880	\$1584	\$950	\$1270	\$150	142 lbs.
TCCU3629	36"	36"	29"	\$932	\$1678	\$950	\$1270	\$150	171 lbs.
TCCU4215	42"	42"	15"	\$1058	\$1904	\$1100	\$1500	\$150	86 lbs.
TCCU4220	42"	42"	20"	\$1142	\$2056	\$1100	\$1500	\$150	114 lbs.
TCCU4224	42"	42"	24"	\$1237	\$2227	\$1100	\$1500	\$150	137 lbs.
TCCU4229	42"	42"	29"	\$1312	\$2362	\$1100	\$1500	\$150	165 lbs.

TO ORDER

EXAMPLE

1. Model Number
2. Material Selection (L for laminate, V for veneer)
3. Top Option (if applicable)
4. Base Option (if applicable)
5. Finish or Laminate Number
6. Metal Finish (if applicable)
7. Other Options (if applicable)

TCCU1615 V TRSP B50B WC30 M42 P101

MODEL MATERIAL TOP BASE FINISH METAL OTHER
NUMBER SELECTION OPTION OPTION NUMBER FINISH OPTIONS

Top Options

- 1/2" Solid Surface Square Edge..... TSSS
 - 1/2" Solid Surface Waterfall Edge TSSW
 - 1/2" Clear Glass Raised TCGR
 - 1/2" Clear Glass Flush..... TCGF
 - Laminate Top on Veneer Table..... TLVT
- Veneer tables w/laminate tops should be priced from the veneer column.

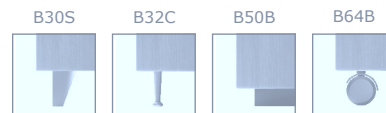
Top options will not change the overall height of tables.



Base Options

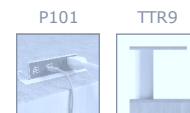
- Folto Leg w/Satin Finish B30S
- Folto Leg w/Chrome Finish B30C
- Fino Leg w/Chrome Finish B32C
- 2" Plinth w/Black Laminate B50B
- 2" Plinth w/Matching Table-Base Finish... B50M
- Casters w/Black Finish B64B

Base options will not change the overall height of tables.

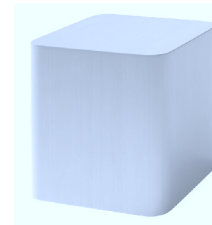


Other Options

- Juice Bar..... P101 \$495
- Pop-up power source, 2 outlets and 4 USB ports
- Dims. 4 3/8" x 8 1/4".
- Two-tier Table Round..... TTR9 \$290
- 2nd Tier Dims. overall height 28" w/9" round solid surface top and metal support. Work surface swivels 360°. Please select metal and solid surface finishes.
- Two-tier Table Square..... TTS9 \$290
- 2nd Tier Dims. overall height 28" w/9" round solid surface top and metal support. Work surface swivels 360°. Please select metal and solid surface finishes.
- Multiple Laminates..... TL03 \$200
- Price includes 2 laminates on a single table.



eased square



ADD-ONS

model	length	width	height	laminat list price	veneer list price	solid surface top	clear glass top	base option	shipping weight
TCES2015	20"	20"	15"	\$529	\$952	\$500	\$850	\$150	35 lbs.
TCES2020	20"	20"	20"	\$583	\$1049	\$500	\$850	\$150	46 lbs.
TCES2024	20"	20"	24"	\$639	\$1150	\$500	\$850	\$150	55 lbs.
TCES2029	20"	20"	29"	\$661	\$1190	\$500	\$850	\$150	67 lbs.
TCES2415	24"	24"	15"	\$641	\$1154	\$680	\$850	\$150	45 lbs.
TCES2420	24"	24"	20"	\$670	\$1206	\$680	\$850	\$150	60 lbs.
TCES2424	24"	24"	24"	\$743	\$1337	\$680	\$850	\$150	72 lbs.
TCES2429	24"	24"	29"	\$798	\$1436	\$680	\$850	\$150	87 lbs.
TCES3015	30"	30"	15"	\$713	\$1283	\$950	\$1000	\$150	68 lbs.
TCES3020	30"	30"	20"	\$774	\$1393	\$950	\$1000	\$150	91 lbs.
TCES3024	30"	30"	24"	\$856	\$1541	\$950	\$1000	\$150	109 lbs.
TCES3029	30"	30"	29"	\$896	\$1613	\$950	\$1000	\$150	132 lbs.
TCES3615	36"	36"	15"	\$787	\$1417	\$1220	\$1275	\$150	89 lbs.
TCES3620	36"	36"	20"	\$836	\$1505	\$1220	\$1275	\$150	118 lbs.
TCES3624	36"	36"	24"	\$931	\$1676	\$1220	\$1275	\$150	142 lbs.
TCES3629	36"	36"	29"	\$985	\$1773	\$1220	\$1275	\$150	172 lbs.
TCES4215	42"	42"	15"	\$1118	\$2012	\$1500	\$1500	\$150	86 lbs.
TCES4220	42"	42"	20"	\$1207	\$2173	\$1500	\$1500	\$150	114 lbs.
TCES4224	42"	42"	24"	\$1308	\$2354	\$1500	\$1500	\$150	137 lbs.
TCES4229	42"	42"	29"	\$1387	\$2497	\$1500	\$1500	\$150	165 lbs.

TO ORDER

EXAMPLE

1. Model Number
2. Material Selection (L for laminate, V for veneer)
3. Top Option (if applicable)
4. Base Option (if applicable)
5. Finish or Laminate Number
6. Metal Finish (if applicable)
7. Other Options (if applicable)

TCES2015 V TRSP B50B WC30 M42 P101

MODEL MATERIAL TOP BASE FINISH METAL OTHER
NUMBER SELECTION OPTION OPTION NUMBER FINISH OPTIONS

Top Options

- 1/2" Solid Surface Square Edge..... TSSS
 - 1/2" Solid Surface Waterfall Edge TSSW
 - 1/2" Clear Glass Raised TCGR
 - 1/2" Clear Glass Flush..... TCGF
 - Laminate Top on Veneer Table..... TLVT
- Veneer tables w/laminate tops should be priced from the veneer column.

Top options will not change the overall height of tables.

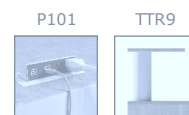
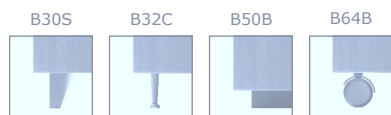
Base Options

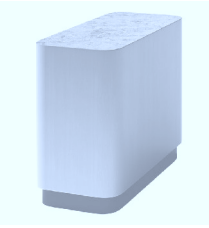
- Folto Leg w/Satin Finish B30S
- Folto Leg w/Chrome Finish B30C
- Fino Leg w/Chrome Finish B32C
- 2" Plinth w/Black Laminate B50B
- 2" Plinth w/Matching Table-Base Finish... B50M
- Casters w/Black Finish B64B

Base options will not change the overall height of tables.

Other Options

- Juice Bar..... P101 \$495
- Pop-up power source, 2 outlets and 4 USB ports
Dims. 4 3/8" x 8 1/4".
- Two-tier Table Round..... TTR9 \$290
- 2nd Tier Dims. overall height 28" w/9" round solid surface top and metal support. Work surface swivels 360°. Please select metal and solid surface finishes.
- Two-tier Table Square..... TTS9 \$290
- 2nd Tier Dims. overall height 28" w/9" round solid surface top and metal support. Work surface swivels 360°. Please select metal and solid surface finishes.
- Multiple Laminates..... TL03 \$200
- Price includes 2 laminates on a single table.





raised rectangle

model	length	width	height	laminate list price	veneer list price	ADD-ONS			shipping weight
						solid surface top	clear glass top	base option	
TCER2415	24"	16"	15"	\$642	\$1156	\$400	\$850	\$150	38 lbs.
TCER2420	24"	16"	20"	\$707	\$1273	\$400	\$850	\$150	50 lbs.
TCER2424	24"	16"	24"	\$766	\$1379	\$400	\$850	\$150	60 lbs.
TCER2429	24"	16"	29"	\$801	\$1442	\$400	\$850	\$150	73 lbs.
TCER3015	30"	18"	15"	\$676	\$1217	\$575	\$1000	\$150	56 lbs.
TCER3020	30"	18"	20"	\$706	\$1271	\$575	\$1000	\$150	74 lbs.
TCER3024	30"	18"	24"	\$775	\$1395	\$575	\$1000	\$150	89 lbs.
TCER3029	30"	18"	29"	\$840	\$1512	\$575	\$1000	\$150	107 lbs.
TCER3615	36"	20"	15"	\$691	\$1244	\$750	\$1275	\$150	81 lbs.
TCER3620	36"	20"	20"	\$758	\$1364	\$750	\$1275	\$150	108 lbs.
TCER3624	36"	20"	24"	\$827	\$1489	\$750	\$1275	\$150	130 lbs.
TCER3629	36"	20"	29"	\$865	\$1557	\$750	\$1275	\$150	157 lbs.
TCER4215	42"	24"	15"	\$792	\$1426	\$925	\$1500	\$150	84 lbs.
TCER4220	42"	24"	20"	\$859	\$1546	\$925	\$1500	\$150	112 lbs.
TCER4224	42"	24"	24"	\$946	\$1703	\$925	\$1500	\$150	134 lbs.
TCER4229	42"	24"	29"	\$994	\$1789	\$925	\$1500	\$150	162 lbs.
TCER4815	48"	24"	15"	\$852	\$1534	\$1100	\$1500	\$150	89 lbs.
TCER4820	48"	24"	20"	\$922	\$1660	\$1100	\$1500	\$150	118 lbs.
TCER4824	48"	24"	24"	\$965	\$1737	\$1100	\$1500	\$150	142 lbs.
TCER4829	48"	24"	29"	\$1031	\$1856	\$1100	\$1500	\$150	171 lbs.

TO ORDER

EXAMPLE

1. Model Number
2. Material Selection (L for laminate, V for veneer)
3. Top Option (if applicable)
4. Base Option (if applicable)
5. Finish or Laminate Number
6. Metal Finish (if applicable)
7. Other Options (if applicable)

TCER2415 L V TRSP B50B WC30 M42 P101

MODEL MATERIAL TOP BASE FINISH METAL OTHER
NUMBER SELECTION OPTION OPTION NUMBER FINISH OPTIONS

Top Options

- 1/2" Solid Surface Square Edge..... TSSS
 - 1/2" Solid Surface Waterfall Edge TSSW
 - 1/2" Clear Glass Raised TCGR
 - 1/2" Clear Glass Flush..... TCGF
 - Laminate Top on Veneer Table..... TLVT
- Veneer tables w/laminate tops should be priced from the veneer column.

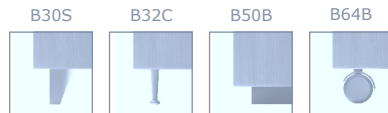
Top options will not change the overall height of tables.



Base Options

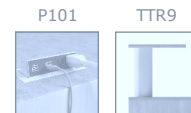
- Folto Leg w/Satin Finish B30S
- Folto Leg w/Chrome Finish B30C
- Fino Leg w/Chrome Finish B32C
- 2" Plinth w/Black Laminate B50B
- 2" Plinth w/Matching Table-Base Finish... B50M
- Casters w/Black Finish B64B

Base options will not change the overall height of tables.



Other Options

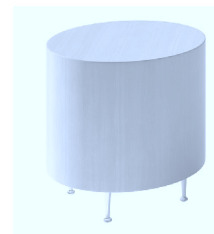
- Juice Bar..... P101 \$495
- Pop-up power source, 2 outlets and 4 USB ports
- Dims. 4 3/8" x 8 1/4".
- Two-tier Table Round..... TTR9 \$290
- 2nd Tier Dims. overall height 28" w/9" round solid surface top and metal support. Work surface swivels 360°. Please select metal and solid surface finishes.
- Two-tier Table Square..... TTS9 \$290
- 2nd Tier Dims. overall height 28" w/9" round solid surface top and metal support. Work surface swivels 360°. Please select metal and solid surface finishes.
- Multiple Laminates..... TL03 \$200
- Price includes 2 laminates on a single table.



phone: 330-833-4102

atriadi.com

round



ADD-ONS

model	diameter	height	laminate list price	veneer list price	solid surface top	clear glass top	base option	shipping weight
TCRO1615	16"	15"	\$483	\$869	\$425	\$850	\$150	20 lbs.
TCRO1620	16"	20"	\$536	\$965	\$425	\$850	\$150	26 lbs.
TCRO1624	16"	24"	\$553	\$995	\$425	\$850	\$150	31 lbs.
TCRO1629	16"	29"	\$570	\$995	\$425	\$850	\$150	38 lbs.
TCRO1815	18"	15"	\$499	\$1026	\$500	\$850	\$150	24 lbs.
TCRO1820	18"	20"	\$509	\$916	\$500	\$850	\$150	32 lbs.
TCRO1824	18"	24"	\$540	\$972	\$500	\$850	\$150	36 lbs.
TCRO1829	18"	29"	\$560	\$1008	\$500	\$850	\$150	46 lbs.
TCRO2015	20"	15"	\$539	\$970	\$575	\$850	\$150	26 lbs.
TCRO2020	20"	20"	\$603	\$1085	\$575	\$850	\$150	35 lbs.
TCRO2024	20"	24"	\$666	\$1199	\$575	\$850	\$150	42 lbs.
TCRO2029	20"	29"	\$688	\$1238	\$575	\$850	\$150	51 lbs.
TCRO2415	24"	15"	\$562	\$1012	\$725	\$850	\$150	35 lbs.
TCRO2420	24"	20"	\$622	\$1120	\$725	\$850	\$150	46 lbs.
TCRO2424	24"	24"	\$682	\$1228	\$725	\$850	\$150	55 lbs.
TCRO2429	24"	29"	\$724	\$1303	\$725	\$850	\$150	67 lbs.
TCRO3015	30"	15"	\$679	\$1222	\$910	\$1000	\$150	45 lbs.
TCRO3020	30"	20"	\$710	\$1278	\$910	\$1000	\$150	60 lbs.
TCRO3024	30"	24"	\$821	\$1478	\$910	\$1000	\$150	72 lbs.
TCRO3029	30"	29"	\$872	\$1570	\$910	\$1000	\$150	87 lbs.
TCRO3615	36"	15"	\$801	\$1442	\$1100	\$1275	\$150	56 lbs.
TCRO3620	36"	20"	\$861	\$1550	\$1100	\$1275	\$150	74 lbs.
TCRO3624	36"	24"	\$927	\$1669	\$1100	\$1275	\$150	89 lbs.
TCRO3629	36"	29"	\$977	\$1759	\$1100	\$1275	\$150	107 lbs.

TO ORDER

EXAMPLE

1. Model Number
2. Material Selection (L for laminate, V for veneer)
3. Top Option (if applicable)
4. Base Option (if applicable)
5. Finish or Laminate Number
6. Metal Finish (if applicable)
7. Other Options (if applicable)

TCRO1615 V TRSP B50B WC30 M42 P101

MODEL MATERIAL TOP BASE FINISH METAL OTHER
NUMBER SELECTION OPTION OPTION NUMBER FINISH OPTIONS

Top Options

- 1/2" Solid Surface Square Edge..... TSSS
 - 1/2" Solid Surface Waterfall Edge TSSW
 - 1/2" Clear Glass Raised TCGR
 - 1/2" Clear Glass Flush..... TCGF
 - Laminate Top on Veneer Table..... TLVT
- Veneer tables w/laminate tops should be priced from the veneer column.

Top options will not change the overall height of tables.

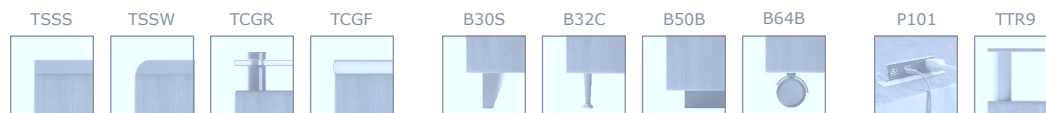
Base Options

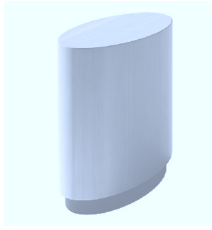
- Folto Leg w/Satin Finish B30S
- Folto Leg w/Chrome Finish B30C
- Fino Leg w/Chrome Finish B32C
- 2" Plinth w/Black Laminate B50B
- 2" Plinth w/Matching Table-Base Finish... B50M
- Casters w/Black Finish B64B

Base options will not change the overall height of tables.

Other Options

- Juice Bar..... P101 \$495
- Pop-up power source, 2 outlets and 4 USB ports
- Dims. 4 3/8" x 8 1/4".
- Two-tier Table Round..... TTR9 \$290
- 2nd Tier Dims. overall height 28" w/9" round solid surface top and metal support. Work surface swivels 360°. Please select metal and solid surface finishes.
- Two-tier Table Square..... TTS9 \$290
- 2nd Tier Dims. overall height 28" w/9" round solid surface top and metal support. Work surface swivels 360°. Please select metal and solid surface finishes.
- Multiple Laminates..... TL03 \$200
- Price includes 2 laminates on a single table.





ellipse

model	length	width	height	laminite list price	veneer list price	ADD-ONS			shipping weight
						solid surface top	clear glass top	base option	
TCEL2015	20"	12"	15"	\$635	\$1143	\$425	\$850	\$150	26 lbs.
TCEL2020	20"	12"	20"	\$690	\$1242	\$425	\$850	\$150	35 lbs.
TCEL2024	20"	12"	24"	\$751	\$1352	\$425	\$850	\$150	42 lbs.
TCEL2029	20"	12"	29"	\$806	\$1451	\$425	\$850	\$150	51 lbs.
TCEL2215	22"	14"	15"	\$648	\$1166	\$450	\$850	\$150	30 lbs.
TCEL2220	22"	14"	20"	\$715	\$1287	\$450	\$850	\$150	40 lbs.
TCEL2224	22"	14"	24"	\$776	\$1397	\$450	\$850	\$150	48 lbs.
TCEL2229	22"	14"	29"	\$825	\$1485	\$450	\$850	\$150	58 lbs.
TCEL2415	24"	16"	15"	\$678	\$1220	\$475	\$850	\$150	35 lbs.
TCEL2420	24"	16"	20"	\$753	\$1355	\$475	\$850	\$150	46 lbs.
TCEL2424	24"	16"	24"	\$819	\$1474	\$475	\$850	\$150	55 lbs.
TCEL2429	24"	16"	29"	\$859	\$1546	\$475	\$850	\$150	67 lbs.
TCEL2415	30"	22"	15"	\$784	\$1411	\$535	\$1000	\$150	45 lbs.
TCEL3020	30"	22"	20"	\$818	\$1472	\$535	\$1000	\$150	55 lbs.
TCEL3024	30"	22"	24"	\$903	\$1625	\$535	\$1000	\$150	72 lbs.
TCEL3029	30"	22"	29"	\$976	\$1757	\$535	\$1000	\$150	87 lbs.
TCEL3615	36"	24"	15"	\$843	\$1517	\$600	\$1275	\$150	56 lbs.
TCEL3620	36"	24"	20"	\$925	\$1665	\$600	\$1275	\$150	74 lbs.
TCEL3624	36"	24"	24"	\$1009	\$1816	\$600	\$1275	\$150	89 lbs.
TCEL3629	36"	24"	29"	\$1055	\$1899	\$600	\$1275	\$150	107 lbs.

TO ORDER

EXAMPLE

1. Model Number
2. Material Selection (L for laminate, V for veneer)
3. Top Option (if applicable)
4. Base Option (if applicable)
5. Finish or Laminate Number
6. Metal Finish (if applicable)
7. Other Options (if applicable)

TCEL2015 V TRSP B50B WC30 M42 P101

MODEL MATERIAL TOP BASE FINISH METAL OTHER
NUMBER SELECTION OPTION OPTION NUMBER FINISH OPTIONS

Top Options

- 1/2" Solid Surface Square Edge..... TSSS
 - 1/2" Solid Surface Waterfall Edge TSSW
 - 1/2" Clear Glass Raised TCGR
 - 1/2" Clear Glass Flush..... TCGF
 - Laminate Top on Veneer Table..... TLVT
- Veneer tables w/laminate tops should be priced from the veneer column.

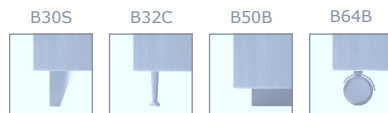
Top options will not change the overall height of tables.



Base Options

- Folto Leg w/Satin Finish B30S
- Folto Leg w/Chrome Finish B30C
- Fino Leg w/Chrome Finish B32C
- 2" Plinth w/Black Laminate B50B
- 2" Plinth w/Matching Table-Base Finish... B50M
- Casters w/Black Finish B64B

Base options will not change the overall height of tables.



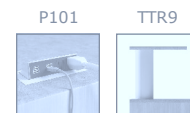
Other Options

- Juice Bar..... P101 \$495
- Pop-up power source, 2 outlets and 4 USB ports
Dims. 4 3/8" x 8 1/4".

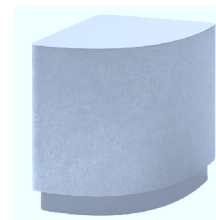
- Two-tier Table Round..... TTR9 \$290
- 2nd Tier Dims. overall height 28" w/9" round solid surface top and metal support. Work surface swivels 360°. Please select metal and solid surface finishes.

- Two-tier Table Square..... TTS9 \$290
- 2nd Tier Dims. overall height 28" w/9" round solid surface top and metal support. Work surface swivels 360°. Please select metal and solid surface finishes.

- Multiple Laminates..... TL03 \$200
- Price includes 2 laminates on a single table.



corner round



ADD-ONS

model	radius	height	laminate list price	veneer list price	solid surface top	clear glass top	base option	shipping weight
TCCR1815	18"	15"	\$490	\$882	\$500	\$850	\$150	20 lbs.
TCCR1820	18"	20"	\$548	\$986	\$500	\$850	\$150	26 lbs.
TCCR1824	18"	24"	\$616	\$1109	\$500	\$850	\$150	31 lbs.
TCCR1829	18"	29"	\$644	\$1159	\$500	\$850	\$150	38 lbs.
TCCR2015	20"	15"	\$522	\$940	\$570	\$850	\$150	24 lbs.
TCCR2020	20"	20"	\$576	\$1037	\$570	\$850	\$150	32 lbs.
TCCR2024	20"	24"	\$630	\$1134	\$570	\$850	\$150	36 lbs.
TCCR2029	20"	29"	\$668	\$1202	\$570	\$850	\$150	46 lbs.
TCCR2415	24"	15"	\$617	\$1111	\$710	\$850	\$150	26 lbs.
TCCR2420	24"	20"	\$628	\$1130	\$710	\$850	\$150	35 lbs.
TCCR2424	24"	24"	\$665	\$1197	\$710	\$850	\$150	42 lbs.
TCCR2429	24"	29"	\$689	\$1240	\$710	\$850	\$150	51 lbs.
TCCR3015	30"	15"	\$642	\$1012	\$905	\$1000	\$150	35 lbs.
TCCR3020	30"	20"	\$654	\$1120	\$905	\$1000	\$150	46 lbs.
TCCR3024	30"	24"	\$692	\$1228	\$905	\$1000	\$150	55 lbs.
TCCR3029	30"	29"	\$717	\$1303	\$905	\$1000	\$150	67 lbs.
TCCR3615	36"	15"	\$732	\$1222	\$1100	\$1275	\$150	45 lbs.
TCCR3620	36"	20"	\$767	\$1278	\$1100	\$1275	\$150	60 lbs.
TCCR3624	36"	24"	\$850	\$1478	\$1100	\$1275	\$150	72 lbs.
TCCR3629	36"	29"	\$918	\$1570	\$1100	\$1275	\$150	87 lbs.

TO ORDER

EXAMPLE

1. Model Number
2. Material Selection (L for laminate, V for veneer)
3. Top Option (if applicable)
4. Base Option (if applicable)
5. Finish or Laminate Number
6. Metal Finish (if applicable)
7. Other Options (if applicable)

TCCR1815 V TRSP B50B WC30 M42 P101

MODEL MATERIAL TOP BASE FINISH METAL OTHER
NUMBER SELECTION OPTION OPTION NUMBER FINISH OPTIONS

Top Options

- 1/2" Solid Surface Square Edge..... TSSS
 - 1/2" Solid Surface Waterfall Edge TSSW
 - 1/2" Clear Glass Raised TCGR
 - 1/2" Clear Glass Flush..... TCGF
 - Laminate Top on Veneer Table..... TLVT
- Veneer tables w/laminate tops should be priced from the veneer column.

Top options will not change the overall height of tables.

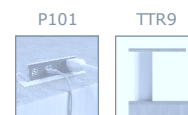
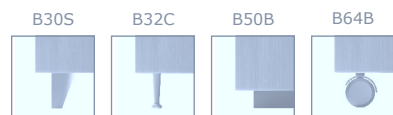
Base Options

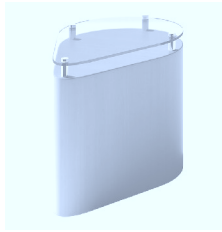
- Folto Leg w/Satin Finish B30S
- Folto Leg w/Chrome Finish B30C
- Fino Leg w/Chrome Finish B32C
- 2" Plinth w/Black Laminate B50B
- 2" Plinth w/Matching Table-Base Finish... B50M
- Casters w/Black Finish B64B

Base options will not change the overall height of tables.

Other Options

- Juice Bar..... P101 \$495
Pop-up power source, 2 outlets and 4 USB ports
Dims. 4 3/8" x 8 1/4".
- Two-tier Table Round..... TTR9 \$290
2nd Tier Dims. overall height 28" w/9" round solid surface top and metal support. Work surface swivels 360°. Please select metal and solid surface finishes.
- Two-tier Table Square..... TTS9 \$290
2nd Tier Dims. overall height 28" w/9" round solid surface top and metal support. Work surface swivels 360°. Please select metal and solid surface finishes.
- Multiple Laminates..... TL03 \$200
Price includes 2 laminates on a single table.





water-drop

model	length	width	height	laminate list price	veneer list price	ADD-ONS			shipping weight
						solid surface top	clear glass top	base option	
TCWD2315	23"	16"	15"	\$483	\$869	\$500	\$850	\$150	26 lbs.
TCWD2320	23"	16"	20"	\$536	\$965	\$500	\$850	\$150	35 lbs.
TCWD2324	23"	16"	24"	\$553	\$995	\$500	\$850	\$150	42 lbs.
TCWD2329	23"	16"	29"	\$589	\$1060	\$500	\$850	\$150	51 lbs.
TCWD2615	26"	18"	15"	\$629	\$1132	\$520	\$1000	\$150	30 lbs.
TCWD2620	26"	18"	20"	\$641	\$1154	\$520	\$1000	\$150	40 lbs.
TCWD2624	26"	18"	24"	\$678	\$1220	\$520	\$1000	\$150	48 lbs.
TCWD2629	26"	18"	29"	\$703	\$1265	\$520	\$1000	\$150	58 lbs.
TCWD2815	28"	20"	15"	\$639	\$1150	\$535	\$1000	\$150	35 lbs.
TCWD2820	28"	20"	20"	\$726	\$1307	\$535	\$1000	\$150	46 lbs.
TCWD2824	28"	20"	24"	\$756	\$1361	\$535	\$1000	\$150	55 lbs.
TCWD2829	28"	20"	29"	\$795	\$1431	\$535	\$1000	\$150	67 lbs.
TCWD3415	34"	24"	15"	\$671	\$1208	\$580	\$1275	\$150	45 lbs.
TCWD3420	34"	24"	20"	\$726	\$1307	\$580	\$1275	\$150	55 lbs.
TCWD3424	34"	24"	24"	\$781	\$1406	\$580	\$1275	\$150	72 lbs.
TCWD3429	34"	24"	29"	\$820	\$1476	\$580	\$1275	\$150	87 lbs.
TCWD4315	43"	30"	15"	\$761	\$1370	\$650	\$1500	\$150	56 lbs.
TCWD4320	43"	30"	20"	\$833	\$1499	\$650	\$1500	\$150	74 lbs.
TCWD4324	43"	30"	24"	\$896	\$1613	\$650	\$1500	\$150	89 lbs.
TCWD4329	43"	30"	29"	\$923	\$1661	\$650	\$1500	\$150	107 lbs.

TO ORDER

EXAMPLE

1. Model Number
2. Material Selection (L for laminate, V for veneer)
3. Top Option (if applicable)
4. Base Option (if applicable)
5. Finish or Laminate Number
6. Metal Finish (if applicable)
7. Other Options (if applicable)

TCWD2315 V TRSP B50B WC30 M42 P101

MODEL MATERIAL TOP BASE FINISH METAL OTHER
NUMBER SELECTION OPTION OPTION NUMBER FINISH OPTIONS

Top Options

- 1/2" Solid Surface Square Edge..... TSSS
 - 1/2" Solid Surface Waterfall Edge TSSW
 - 1/2" Clear Glass Raised TCGR
 - 1/2" Clear Glass Flush..... TCGF
 - Laminate Top on Veneer Table..... TLVT
- Veneer tables w/laminate tops should be priced from the veneer column.

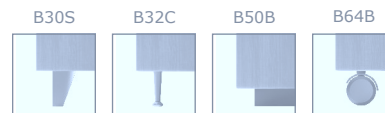
Top options will not change the overall height of tables.



Base Options

- Folto Leg w/Satin Finish B30S
- Folto Leg w/Chrome Finish B30C
- Fino Leg w/Chrome Finish B32C
- 2" Plinth w/Black Laminate B50B
- 2" Plinth w/Matching Table-Base Finish... B50M
- Casters w/Black Finish B64B

Base options will not change the overall height of tables.

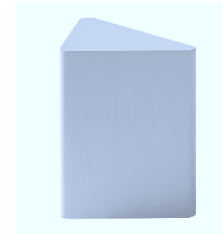


Other Options

- Juice Bar..... P101 \$495
- Pop-up power source, 2 outlets and 4 USB ports Dims. 4 3/8" x 8 1/4".
- Two-tier Table Round..... TTR9 \$290
- 2nd Tier Dims. overall height 28" w/9" round solid surface top and metal support. Work surface swivels 360°. Please select metal and solid surface finishes.
- Two-tier Table Square..... TTS9 \$290
- 2nd Tier Dims. overall height 28" w/9" round solid surface top and metal support. Work surface swivels 360°. Please select metal and solid surface finishes.
- Multiple Laminates..... TL03 \$200
- Price includes 2 laminates on a single table.



eased triangle



ADD-ONS

model	side 1	side2	side 3	height	laminate list price	veneer list price	solid surface top	clear glass top	base option	shipping weight
TCET2515	25"	18"	18"	15"	\$505	\$909	\$425	\$850	\$150	26 lbs.
TCET2520	25"	18"	18"	20"	\$553	\$995	\$425	\$850	\$150	35 lbs.
TCET2524	25"	18"	18"	24"	\$623	\$1121	\$425	\$850	\$150	42 lbs.
TCET2529	25"	18"	18"	29"	\$666	\$1199	\$425	\$850	\$150	51 lbs.
TCET3015	30"	21"	21"	15"	\$529	\$952	\$500	\$1000	\$150	29 lbs.
TCET3020	30"	21"	21"	20"	\$580	\$1044	\$500	\$1000	\$150	38 lbs.
TCET3024	30"	21"	21"	24"	\$642	\$1156	\$500	\$1000	\$150	46 lbs.
TCET3029	30"	21"	21"	29"	\$687	\$1237	\$500	\$1000	\$150	55 lbs.
TCET3515	35"	25"	25"	15"	\$641	\$1154	\$575	\$1275	\$150	40 lbs.
TCET3520	35"	25"	25"	20"	\$671	\$1208	\$575	\$1275	\$150	53 lbs.
TCET3524	35"	25"	25"	24"	\$736	\$1325	\$575	\$1275	\$150	64 lbs.
TCET3529	35"	25"	25"	29"	\$795	\$1431	\$575	\$1275	\$150	77 lbs.
TCET4015	40"	28"	28"	15"	\$713	\$1283	\$650	\$1500	\$150	45 lbs.
TCET4020	40"	28"	28"	20"	\$774	\$1393	\$650	\$1500	\$150	60 lbs.
TCET4024	40"	28"	28"	24"	\$852	\$1534	\$650	\$1500	\$150	72 lbs.
TCET4029	40"	28"	28"	29"	\$896	\$1613	\$650	\$1500	\$150	87 lbs.
TCET4515	45"	32"	32"	15"	\$784	\$1411	\$725	\$1500	\$150	56 lbs.
TCET4520	45"	32"	32"	20"	\$833	\$1499	\$725	\$1500	\$150	74 lbs.
TCET4524	45"	32"	32"	24"	\$930	\$1674	\$725	\$1500	\$150	89 lbs.
TCET4529	45"	32"	32"	29"	\$983	\$1769	\$725	\$1500	\$150	107 lbs.

TO ORDER

EXAMPLE

1. Model Number
2. Material Selection (L for laminate, V for veneer)
3. Top Option (if applicable)
4. Base Option (if applicable)
5. Finish or Laminate Number
6. Metal Finish (if applicable)
7. Other Options (if applicable)

TCET2515 V TRSP B50B WC30 M42 P101

MODEL MATERIAL TOP BASE FINISH METAL OTHER
NUMBER SELECTION OPTION OPTION NUMBER FINISH OPTIONS

Top Options

- 1/2" Solid Surface Square Edge..... TSSS
 - 1/2" Solid Surface Waterfall Edge TSSW
 - 1/2" Clear Glass Raised TCGR
 - 1/2" Clear Glass Flush..... TCGF
 - Laminate Top on Veneer Table..... TLVT
- Veneer tables w/laminate tops should be priced from the veneer column.

Top options will not change the overall height of tables.

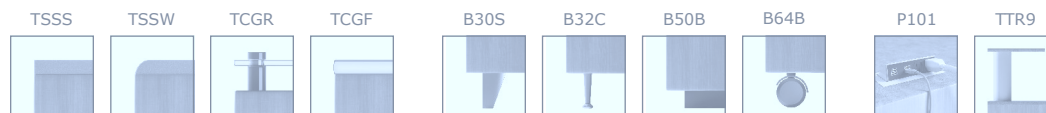
Base Options

- Folto Leg w/Satin Finish B30S
- Folto Leg w/Chrome Finish B30C
- Fino Leg w/Chrome Finish B32C
- 2" Plinth w/Black Laminate B50B
- 2" Plinth w/Matching Table-Base Finish... B50M
- Casters w/Black Finish B64B

Base options will not change the overall height of tables.

Other Options

- Juice Bar..... P101 \$495
- Pop-up power source, 2 outlets and 4 USB ports Dims. 4 3/8" x 8 1/4".
- Two-tier Table Round..... TTR9 \$290
- 2nd Tier Dims. overall height 28" w/9" round solid surface top and metal support. Work surface swivels 360°. Please select metal and solid surface finishes.
- Two-tier Table Square..... TTS9 \$290
- 2nd Tier Dims. overall height 28" w/9" round solid surface top and metal support. Work surface swivels 360°. Please select metal and solid surface finishes.
- Multiple Laminates..... TL03 \$200
- Price includes 2 laminates on a single table.

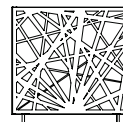


atriadi.com

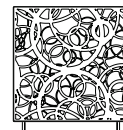
Atriádi
1369 Sanders, SW
Massillon, OH 44648
phone: 330-833-4102
Fax: 866-631-0288

rotolo table

model	length	width	height	list price
	24"	24"	12"	\$2050.00
	30"	30"	12"	\$2275.00
	36"	36"	12"	\$2525.00



Linea



arc



Lace

bench

model	length	width	height	list price
laminated				\$1285.00
solid surface				\$1937.50
upholstered				\$1123.45



noteworthy

model	list price
bluetooth	\$1450.00 plus table
wifi	\$4550.00 plus table



atriadi.com

phone: 330-833-4102

tech option

model	list price
juice bar	\$495.00
noteworthy - bluetooth	\$1450.00 plus table
noteworthy - wifi	\$4550.00 plus table



planters

model	length	width	height	list price
				\$135.00 add on price
metal design side				\$664.00

